

# THE BUILDER

A PUBLICATION OF FIRST LUTHERAN CHURCH



*According to the Grace of God given to me, like a skilled master builder I laid a foundation, and someone else is building on it. Each builder must choose with care how to build on it. No one can lay any foundation other than the one that has been laid; that foundation is Jesus Christ.*

1 Cor. 3:10-11



## I N S I D E

Advent & Christmas	1
Pastor's Message	2
From the President	3
Youth & Family	4-6
Worship & Music Ministry	7
Study & Prayer	8-9
Giving Opportunities	10-12
Serving	12-13
Relating	14-16
Reaching Out	17
Minutes	17-18
Officers & Boards	18
December 2011 Calendar	19
FLC Staff	20

## Advent & Christmas

### 5:30 p.m. Vespers - Nov. 30, Dec. 7 & 14

A light meal will be served after worship on Nov. 30 & Dec. 14. See p. 3 for more information.

### Prophets and Angels - Sun., Dec. 11

#### 4:00 p.m. - An Advent celebration of Lessons and Carols



Music by Aaron David Miller, texts by Herbert F. Brokering  
Rejoice in the season with this stunning festival of lessons and carol. Featuring music for organ, choir, and oboe, and tied together with beautiful readings of scripture and poetry, this service points us towards the birth of Jesus Christ and illustrates the Advent of our faith journey. As the *Year of Celebration* continues at First Lutheran, all are invited to participate in an afternoon assembly singing, thoughtful meditation, and exuberant worship.

*"Our whole life is an Advent, a time of waiting for the ultimate, for the time when there will be a new heaven and a new earth, when all people will be brothers and sisters."* - Dietrich Bonhoeffer (1906-1945)

### Christmas Program

#### Sun., Dec. 18 at 11:00 a.m. - 4 Year Olds to 6th Grade Sunday School

Sunday school children age 4 through 6<sup>th</sup> grade will be leading worship and telling the Christmas story through narration and song on Sun., Dec. 18 at the 11:00 a.m. worship. Everyone is invited to the Parish Hall following worship for our annual Christmas program lunch of sloppy Joes and birthday cake for Jesus.

### Christmas Eve - Dec. 24

#### 3:00 p.m. - Worship

#### 4:30 & 10:00 p.m. - Candlelight Service of Holy Communion

Young instrumentalists at 3:00  
Angel Choir and Youth Ringers at 4:30  
Soli Deo Gloria, Jubilation Ringers at 10:00  
Nursery is available at 3:00 and 4:30 p.m.

### Christmas Day - Dec. 25

#### Sunday worship services at 8:30 & 10:00 a.m.

Please note special worship times for Christmas Day.



# VISION & MISSION

# MESSAGE FROM THE SENIOR PASTOR

**THE PEOPLE OF FIRST  
LUTHERAN CHURCH WILL....**

**Love one another as  
Christ loved us by:**

honoring, respecting,  
and affirming one another;  
practicing Christian hospitality;  
ministering to the elderly,  
and to those with special needs.

**Grow in Faith through:**

strong Christian spiritual  
education programs for all ages;  
small group Bible studies;  
inspirational worship, art and music;  
cultivating a life of prayer;  
compelling youth and family ministry.

**Share the Gospel through:**

a positive Christ-centered atmosphere;  
joyful fellowship with one another  
in Jesus' name; intentional,  
prayer-filled communication;  
gathering around the table.

**Spread the Gospel through:**

active individual and  
congregational involvement  
in outreach to the local community;  
active individual and  
congregational involvement  
in global ministries.

*The Builder* is organized along key elements of Christian Discipleship. The goal is to provide a resource to assist individuals and the church body as a whole on the journey of spiritual transformation:

- ◆ Worship
- ◆ Study
- ◆ Prayer
- ◆ Giving
- ◆ Serving
- ◆ Relating

**Dear Brothers and Sisters in Christ,**

One of my most powerful memories of Ethiopia was no matter where we travelled, people were everywhere, even in places where the land was completely desolate (like after the devastation of the Tsetse fly). Despite that vast population located everywhere, the darkness at night was absolutely dark. If you were driving along the countryside there was no light anywhere.



Here in the United States our nights are filled with lights, yet there are homes, streets, neighborhoods, cities which have no light. The media contains nightmares and tragedies which are not dreams but reality. Even our children are not safe. Their worst monsters are sometimes not figments of their imaginations, but adults who have betrayed their trust. Darkness is not only a lack of city lamps to light our streets, darkness is also found in our souls, our hearts and our world.

There is more, tragedy comes to all. There is no protection from sorrow, health and economic crisis, untimely deaths, war and worldwide disasters. Even the holidays cannot protect us from such things. Yet, the hymn writer, Phillips Brooks, dares to sing the good news against this darkness. We together join his singing, pushing back against the night. When we cannot sing through our tears our brothers and sisters in Christ sing for us.

**O little town of Bethlehem,  
how still we see thee lie!  
Above thy deep and dreamless sleep  
the silent stars go by;  
yet in thy dark streets shineth  
the everlasting light.  
The hopes and fears of all the years  
are met in thee tonight.**

If this light dared to shine over a barn in a nation whose tyrannical, paranoid, fearful king slaughtered innocent babies in Bethlehem, can this light shine today in our broken world and broken lives? "Yes," we sing, "most certainly, yes". As we enter this Advent season of penance, looking to the baby in the manger who is our Lord and the Lord of all, we sing again: "O come to us, abide with us, our Lord Immanuel." May the good news of Christ fill your hearts and homes with his peace this Advent and Christmas season.

God's peace to us we pray,

*Pastor Larson*

Pastor Larson with all the staff of First Lutheran

## A Word from the President

Becky Hoversten-Mellem



Advent is a time for preparing and waiting. The anticipation and preparation for the birth of Jesus is a favorite time in the Church year. Our church is beautifully transformed with decorations. The sanctuary changes each Sunday in Advent as more decorative details are added, building to Christmas Eve and the celebration of His birth.

God sent His Son to change the world. Nothing was the same, all things were made new in His Grace. As Lutherans we know that God causes change in us and in our world. Luther did not accept the status quo. But even though we know about change, that doesn't mean we welcome it or readily accept it. Change brings uncertainty, a time of loss, even grief. Fear of change and the unknown can be difficult to overcome. But as told throughout the scriptures, out of change comes renewal.

This is thoughtfully and eloquently described in an article by Martha Stortz (a professor at Augsburg College) in the June 2011 Lutheran Woman Today. At FLC we will soon enter a process of considering a change in our governing structure. This process will help us consider how we will make decisions and carry out God's work. Change does not come easily, but together we will discern the changes that God has in mind for us. God promises to lead us, and even carry us, through the changes we face.

As we anticipate and prepare for the birth of His Son, may we prayerfully consider the ways that Jesus changes and transforms all who seek to know Him.

May you wait with patience and hope  
and joyful anticipation,

Becky Hoversten-Mellem  
Congregational President

## Lutefisk, Salmon & Meatball Dinner

Wed., Dec. 7, Noon to 7:00 p.m.

Cost: \$15 Adults / \$5 Children 10 and Under

Come to the feast! The Lutefisk, Salmon and Meatball Dinner is held on the first Wednesday in December. This year it is on Dec. 7. Invite your family and friends and enjoy a wonderful meal.

There are volunteer opportunities for anyone wanting to help prepare:

- ★ **Tues., Dec. 6**, 9:00 a.m. to 2:00 p.m.: Peel 500 lbs. of potatoes, food preparation, roll 100 lbs. of meatballs and set up the dining room.
- ★ **Wed., Dec. 7**, 8:00 a.m. to 9:00 p.m.: Final set up, prepare and serve food, act as hosts and hostesses, and help clean up.

Please sign up on the kitchen bulletin board to help, or e-mail Char Juntunen to let her know the day and time you can work ([charjuntunen@hotmail.com](mailto:charjuntunen@hotmail.com)). You can also call the church office, 728-3668.

## Advent Vespers Services

Nov. 30, Dec. 7 & 14

Wednesday Evenings 5:30 p.m.

**Midweek Worship during Advent:** These half hour services will be a chance to quiet our hectic lives and reflect on the message of Advent in song and story, candlelight and contemplation. Like Lenten midweek services, this time of worship will help center us in the season, and focus our lives on what is truly important.

The Board of Worship, Art and Music will host a dinner following the 5:30 p.m. service on Wed., Nov. 30, and the Board of Education will host the meal on Wed., Dec. 14.



**Have you considered a personalized ELW (red hymnal) or the Lutheran Study Bible for your loved one at Christmas? Call the church office for more information.**

## Fun Continues in Faith Quest

In the first couple months of the new education year 1st-6th graders have been enjoying the second year of Faith Quest. Faith Quest is the name of the workshop rotation Sunday school classes. Each week the kids explore a story through a different workshop. They study one story for 4 weeks at a time, so by the end of the story rotation the kids really know the story well and can tell it to others.

September began with the story of Abraham and Sarah being promised many descendants and the story of the birth of Isaac nearly 20 years later. Through video, games, art and drama, the students learned about how God keeps promises and that God can work in their lives in unexpected ways.

In mid-October through mid-November, the story of the Widow's offering was explored through science, cooking, games, and video. The highlight for most of the kids was creating graham cracker offering boxes with cookie coins to tell the story in the cooking workshop.

The last story before the new year began on Nov. 20, exploring the Advent and Christmas narratives. Watch for some murals to be displayed at church that will be created in the next few weeks in the art workshop!

## December's Adult Sunday School Sundays at 9:45 a.m., Parish Hall

Lana Birkeland will be highlighting consequences in the next Love & Logic "mini session" on Dec. 4 from 10-10:30 a.m. in the Parish Hall. Drop off your kiddos, grab a cup of coffee from the Gathering Space and join us! Everyone welcome!

## Looking Ahead: Mark your calendars for Day Camp Week 2012

The staff from Voyageurs Lutheran Ministry will be at First Lutheran on August 6-10, 2012 to lead us in an amazing camp experience. Kids entering Kindergarten through 6<sup>th</sup> Grade are welcome to attend! Invite your friends too! Watch for more information on Camp Sunday which will be in January.

## Bible Basics and Baptism

The journey toward the day of Confirmation has begun for third and fourth graders this fall. Third graders attended a 3-week class about the Bibles they received in worship called "Bible Basics Blast". Parents and kids learned more about how to use their Bibles and the importance of reading God's Word every day. Games were played and fun bookmarks were created. The group also read through the "Gift of Scripture" cards from the congregation. It was a great way to introduce the kids to some of the great verses in scripture and to hear how meaningful these words are to others. Thank you for that gift and passing on the faith!

Fourth graders just finished a 3-week class about baptism. They talked about some of the great stories of God using water to do great things in the lives of God's people, and learned more about what Martin Luther has to say about baptism in the Small Catechism. The fourth graders also learned about serving in worship as Guardian Angels at a baptism in the upcoming year. Watch for these young leaders as they take part in baptisms in worship and represent the congregation in welcoming new members into its family. They will be commissioned on January 8 to begin their task as a Guardian Angel.



## Bible Book-It! has Begun

In October, 4 year olds through 6<sup>th</sup> graders started keeping track of how many minutes they read their Bible each month. Calendars are sent home at the beginning of each month to help them keep track and to give them ideas of what they can read each day.

As part of the promises we make at baptism, we place in their hands the Holy Scriptures. Through this program, we are encouraging them to then read this amazing gift of God's Word they have received. At the end of the year, totals will be added up for how many minutes each child and each grade group has read and celebrate!

## Sharing the Story

from Sarah Gunderson, Dir. of Christian Education

We are people of story. We love to hear stories from friends and family, be entertained by them on television or at the movies, and share them with others. Stories are everywhere in our world. A powerful story can bring about changes in how we think about our world or ourselves.

Our story includes our view of the world and our view of who we are. Our story becomes that inner dialogue we have that speaks to us of who we are and what our purpose is. Our story helps us make sense of our lives. Our story has been shaped and continues to be influenced daily by others and by the experiences we have in our lives. What has influenced your story?

As a people of the Christian faith, we have another story, a really good story that shapes who we are. It is the story of the good news of Jesus Christ. It is the story of God's redeeming love that is for us! This is a story with the power to transform us every day. Through this story, God can come to us and shift our inner narrative of who we think we are. We are the people of God! We are children of God!

We need to share this story. We need to live this story out in our church, our home and our community. We need to make sure it is this story that our children hear and that this story becomes the story that shapes who they are and how they think about themselves. We need to help our children live into this story. We need to give our children a better story than what they hear every day in our world. How can we help our children live out of the story of faith?

In coming months, I hope to share ideas about how to do this and to gather ideas from others. To begin, we must share the story. Deuteronomy 11:18-20 can be a guiding image as we think about the necessity of telling the story at all times so that the story of God's love for us becomes the dominant story in the lives of our children.

*"You shall put these words of mine in your heart and soul, and you shall bind them as a sign on your hand, and fix them as an emblem on your forehead. Teach them to your children, talking about them when you are at home and when you are away, when you lie down and when you rise. Write them on the doorposts of your house and on your gates."*

## Youth Gathering Sale of Stock!

**It's almost here!** The new stock called **FLCY2012** will be hitting the First Lutheran floor on Jan. 8. There will be a **HUGE** advantage to buying early that day.

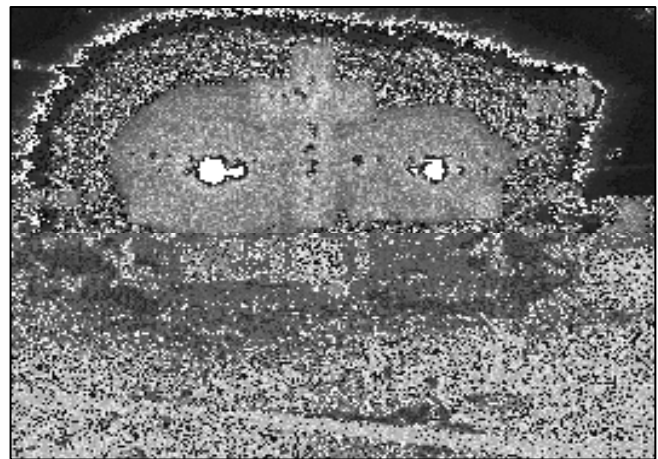
**The Builder Bull Market Special:** If you clip this add out and turn it in at the time of your stock purchase, you'll get your name entered in a drawing for a free FLC Jesus Energy shirt.

**BONUS:** At the same time, if you buy more than one share, you'll get your name entered in the drawing for each share you buy!

**How it works:** The Sale of Stock in **FLCY2012** is simple. Each share is sold for \$25. When you purchase a share you will get a picture and bio of one of the youth. That is who we are asking you to pray for from the time of the purchase until after they get back from the youth gathering. You'll also get a postcard mailed from a youth while on the journey, a booklet of everyone's experiences, and a presentation by the youth about their adventure anchored in Christ after we are back.

**There are different levels of share holders with different advantages.** Feel free to move up from one to the other during the 4 weeks of sales!

- 1 share = postcard, booklet, presentation
- 4 shares = all the above + 8x10 framed photo of group
- 12 shares = all the above + souvenir autographed by the youth
- 20 shares = all the above + FLC shirt + VIP Group Dinner with Chad and Stacy (his wife)



# YOUTH & FAMILY

## Advent Fun with Pottery Burn

What to get grandma and grandpa for Christmas? What could I give to my parents to show my appreciation for everything they do? What should I get for that special someone from the family?

Come one come all for a fantastic time at First Lutheran as we celebrate the Advent Season with Pottery Burn! We are picking up the store and moving it to First for the day. The fun will take place on **Dec. 11, from 12-4 p.m.** as we paint and decorate the ceramics you order. **Please pre-order pieces with Chad to ensure you'll have them for the day.** The ONLY cost is whatever you order...**NO STUDIO FEE!** You can paint for 20 minutes or for all 4 hours, it's entirely up to you! We'll have adults on hand who have experience with this if you've never done it before. It is an appropriate activity or any age!

**Check out the display board in the Upper Commons or Lower Commons to see what you can order and fill out a form.** And Vikings fans, don't worry, we'll have the game on the radio.

The group will finish up in plenty of time to enjoy the "Prophets and Angels" celebration of lessons and carols at 4:00 p.m. in the sanctuary!



## BUNCO!

If you haven't played it, you need to! And if you have played it, you haven't played it with Chad! **On Dec. 10 from 10:00-11:30 a.m.** all are welcome for an exciting game of BUNCO! There will be over 20 prizes to give away, food following the game, and lots of laughs and excitement to share. The best part about BUNCO is that anyone between the ages of 4-104 can play! All it requires of you is to be able to drop dice. The rest is all luck! **Childcare will be provided if you let Chad know by Wed., Dec. 7.** After the M&M Cookie Exchange come **upstairs to the Upper Commons** for some friendly fun with BUNCO!



## 10-12 Grade RECHARGE

**RECHARGE** for 10-12 grade youth is set-up to develop leaders, grow spiritually and faithfully together, and help youth become an active part of the congregation's mission and vision. There are three main parts:

**HIGH ON CHRIST** - is a time for the youth to get together and have some fellowship and fun.

**FAITH RECHARGE** - a time to dig deeper into the written word through multimedia, the Bible, and conversation.

**ANCHOR TIME** - is designated for youth to use their hands for God's work through service learning and projects.

**RECHARGE** will always meet at the church at 4 p.m., but may leave the site depending on the day.



## December News from Promise Preschool

**We are grateful! For our friends, family and our school!**

In December, we spend the entire month telling that Good News of Jesus in story, song, drama, and through play. As we do, the themes of Light and Darkness, Creation and Salvation, the Giver and the Gift become topics for classroom prayer, play, and conversation.

### Christmas Program

We are also planning and preparing for a special celebration! On Wed., Dec. 21, at 10:00 a.m. in the sanctuary, the children will welcome family and friends to a Birth Day party for Jesus. We invite you to join us for the Program and also for refreshments to follow in the Parish Hall after the program.

Promise Preschool will be closed for the holiday break on Thurs., Dec. 22, until we return to school in the New Year on Tues., Jan. 3, 2012.

Blessings and Peace to you from Promise Preschool

# WORSHIP AND MUSIC MINISTRY

## Worship Notes

**Live Radio Broadcast:** KDAL AM 610, 8:30 a.m. Sundays  
**Live Streaming**

**Sun., Dec. 4 8:30 & 11:00 a.m.**

Readings: Isa. 40:1-11; Ps. 85:1-2, 8-13;  
2 Peter 3:8-15a; Mark 1:1-8

**Sun., Dec. 11 8:30 & 11:00 a.m.**

Readings: Isa. 51:1-4, 8-11; Ps. 126;  
1 Thess. 5:16-24; John 1:6-8, 19-28

**Sun., Dec. 18 8:30 & 11:00 a.m.**

Readings: 2 Sam. 7:1-11, 16; Luke 1:46b-55;  
Rom. 16:25-27; Luke 1:26-38

**Sat., Dec. 24 3:00, 4:30 & 10:00 p.m.**

Readings: Isa. 9:2-7; Ps. 96; Titus 2:11-14;  
Luke 2:1-20

**Sun., Dec. 25 8:30 a.m. and 10:00 a.m. (note times)**

Readings: Isa. 62:6-12; Ps. 97; Titus 3:4-7;  
Luke 2:1-20

*Readings are from the Revised Common Lectionary.*

**Sunday School Christmas Program will be on Sunday, December 18 at the 11:00 worship service. A lunch will follow in the Parish Hall for the whole congregation.**



## Worship Attendance

Sun., Oct. 23	338
Sun., Oct. 30	615
Sun., Nov. 6	441
Sun., Nov. 13	421
Sun., Nov. 20	411

## Thank You to Musicians

Thank you to the following for sharing their musical gifts in worship during November: Soli Deo Gloria and Second Service Worship Choirs; Jubilation Ringers; Confirmation Choir; 1st-3rd Graders & Beth Holst, music leader; 4-5 Year Olds & Suzanne Rauvola, music leader; 4th-6th Graders, Kirsten Bich, music leader; Elise Kuutti, cello; Jazz Ensemble: Rich Mowers, Cory Clay, Matt Leibfried, Greg Tiburzi, Tim Stratioti, Jason Branham, Tim Churchill, Jim Erickson, Greg Hilliard .

Thank you for your continued giving to the Karen Sande Tympani Fund at FLC. This special fund was set up to honor Karen for her time and gifts to First Lutheran Church this past year.



## The Angel Choir

**Young Women, 7th Grade and up are invited to sing!**

The young women of First Lutheran are again invited to sing in the Angel Choir during this Advent and Christmas season. Young women in 7th grade through college will make up this "angelic" choir.

Rehearsals will be in the Music Room (London Road level). Come to as many rehearsals as you can.

Sun., Dec. 4	12:00 noon - 1:00 p.m.
Sun., Dec. 11	12:00 noon - 1:00 p.m.
Sun., Dec. 18	12:00 noon - 1:00 p.m.
Sat., Dec. 24	11:00 a.m. - 12:00 noon

The Angel Choir will be singing on

Sun., Dec. 11 at 11:00 a.m.	worship service,
Sun., Dec. 11 at 4:00 p.m.	"Prophets & Angels"
	Lessons and Carols
Sat., Christmas Eve, Dec. 24 at 4:30 p.m.	worship service.

Questions? Contact Beth Holst [bethieholst@gmail.com](mailto:bethieholst@gmail.com) or Karen Sande [ksande@flcduluth.org](mailto:ksande@flcduluth.org) or 728-3668.

# STUDY & PRAYER

## News from the Library

### Wishing you and your family a blessed Christmas!

Listed below is a selection of books currently on display to help you celebrate and enjoy the season.

**The Adventure of Christmas: Helping Children Find Jesus in Our Holiday Traditions** by Lisa Whelchel (Call #: 6 Whe)

**Christmas Jars: A Novel** by Jason F. Wright (Call #: 1 Wri)

**The Christmas List: A Novel** by Richard Paul Evans (Call #: 1 Eva)

**Come, Lord Jesus: Devotions for the Home, Advent, Christmas, Epiphany** by Susan Briehl (Call #: 5 Bri)

**Countdown to Christmas: Devotions for Families** by Laura K. E. Zimmerman (Call #: 6 Zim)

**Homespun Christmas: A Modern Small Town is Unified by Hope in Four Novellas** by Renee DeMarco et al. (Call #: 1 Dem)

**Louisa May Alcott's Christmas Treasury** ed. by Stephen W. Hines (Call #: 1 Alc)

**Make a Christmas Memory: Simple Things You Can Do to Celebrate the True Meaning of Christmas** by Julaine Kammrath (Call #: 6 Kam)

**Stories Behind the Best-loved Songs of Christmas** by Ace Collins (Call #: Col)

### Books for Children:

**The Christmas Miracle of Jonathan Toomey** by Susan Wojciechowski (Call #: C Woj)

**Christmas Tapestry** by Patricia Polacco (Call #: C Pol)

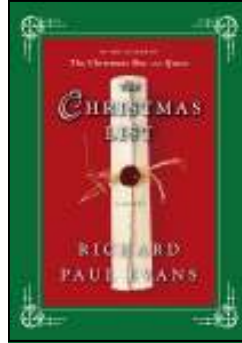
**Go Tell It on the Mountain** by Debbie Trafton O'Neal (Call #: A O'Ne)

**The Little Drummer Mouse** by Mercer Mayer (Call #: B May)

**Penny's Christmas Jar Miracle** by Jason F. Wright (Call #: B Wri)

**Sacred Songs of Christmas: a Family Treasury** (Includes Voices of Children CD) by Concordia Publishing House (Call #: C Con)

**Until the Christ Child Came** by Dandi Daley Mackall (Call #: B Mac)



## FLCW Bible Study Gathering

All FLC women are invited to attend any of the gathering meetings listed. Call the church office for info.

**Ruth Gathering** - Mon., Dec. 5 - 7:00 p.m. at Wuchter's

**Mary & Martha Gathering** - Mon., Dec. 5 - 7:00 p.m. - Upper Commons

**Leah Gathering** - Tues., Dec. 13 - 9:30 a.m., Parish Hall

**Naomi Gathering** - Thurs., Dec. 15 - 1:30 p.m., Gramercy Park

**Elizabeth Gathering** - Wed., Dec. 21 - 9:30 a.m., Upper Commons

**Dorcas Gathering** - Wed., Dec. 21 - 10:00 a.m., Homes

**Esther Gathering** - Wed., Dec. 21 - 1:00 p.m., Lakeshore

## News of the First Family



### *A Loss in the Family*

The family of **Craig Grau** on the death of his wife, **Diane Grau**.

The family of **Avis Opheim** on the death of her husband, **Vern Opheim**.

The family of **Sarah Marks** on the death of her brother **Joe Triplett**.

The family of **Kim Kroll** on the death of her father **Tom Polifka**.

The family of **Lois Janson** on the death of her sister **Barb Janson**.

The family of **Doug Ellingsen** and **Lisa Jeanetta** on the death of their mother **Eleanor Ellingsen**.



### *Baptisms*

Sun., Nov. 27

Cora Rae Emeott

daughter of Marty & Jennie Emeott

Samuel Thomas Witty

son of Scott & Jessica Witty

David Steven Pederson

son of David & Eilidh Pederson,

grandson of Steve & Barbara Reyelts

# STUDY & PRAYER

## Time to Celebrate Devotion Booklet

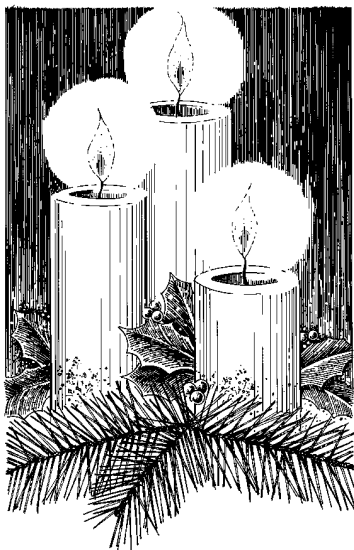


Remember to pick up your *Time to Celebrate* devotion booklet in the Gathering Space. Extra copies will be available for \$3 (Christmas gift idea) starting Dec. 4.

The following is a correction to the devotional booklet. The first paragraph of Char Juntunen's devotional on p.6 was omitted by mistake. Please add the following to her devotional:

"I just spent a day with my younger brother who is in the process of a divorce after 20+ years of marriage. He had moved on the weekend to a rented house. Everything was just brought in and deposited wherever it could fit – a result of friends and family help. My daughter and I and her 3 month old arrived Tuesday morning – bearing lunch - to join him and his 4 year-old granddaughter in finding a task that all of us could do to help him settle in."

A LIGHT SHINES IN THE DARKNESS



**Friday Morning Bible Study  
with Pastor April Larson  
in the Parish Hall from 9:30-11:00 a.m.  
All are welcome.**

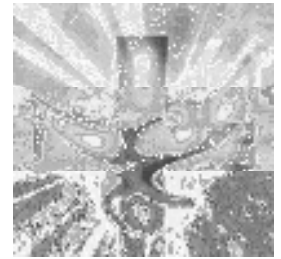
No Bible Study on Dec. 23 & 30.



## Register by January 5<sup>th</sup> for Walking in the Light First Lutheran Church Winter Retreat Jan 20-21, 2012

You are invited to this overnight retreat as an opportunity to:

- Deepen our faith to better serve
- Spend some peaceful time on God's beautiful North Shore and take a moment to listen!
- Move beyond a basic belief to seeking to live each and every day through the Spirit of God



**Retreat Leader:** Spiritual Director Pastor Emily Rova-Hegener

**When:** Overnight January 20-21, 2012 beginning with dinner

Friday evening, 6:00 p.m. ending Saturday at 4:00 p.m.

**Where:** Superior Shores Resort and Conference Center

(www.superiorshores.com) one mile north of Two Harbors.

**Program:** Large group presentations, smaller group sessions, discussion, quiet time for prayer, journaling and reflection, conversation, nature walks, faith stories, worship and fellowship.

**Food, Facilities and Lodging:** Friday dinner, Saturday breakfast and lunch provided. Rooms with two double beds, double occupancy (2 per room)

**What to Bring:** Please bring your Bible, pens and notebook/journal

**Cost:** \$95 per person (a few scholarships available to offset cost); Commuters: \$50 per person

**Questions:** Contact Linda Vokes, 724-1903, or vokes@charter.net.

*Financial support provided by a grant  
from First Lutheran Church Foundation*

### RETREAT REGISTRATION FORM (*Deadline is Thurs., Jan 5*)

Name(s):

Telephone:

Email:

Address:

Roommate preference?  Yes Name:

Prefer private room:  Yes (add \$50 to cost = \$145)

Checks made out to First Lutheran Church (Write "Retreat" on bottom left)

\$95 regular w/lodging (2 per room)

\$145 private room

\$50 commuter (no lodging)

\$55 (I desire a scholarship w/lodging [2 per room])

Mail application and check to First Lutheran Church, 1100 E. Superior St., Duluth, MN 55802 or drop off at church office.

# GIVING

## OCTOBER 2011 MISSION PLAN UPDATE



Ministry & Mission gifts  
 Plus Other Income  
 Total Income  
 Less Expenses  
 Cash Surplus (Deficit)

	2011				Annual Mission Plan	2010 Year to Date Actual
	October Mission Plan	October Actual	Year to Date Mission Plan	Year to Date Actual		
Ministry & Mission gifts	\$63,127	\$74,766	\$688,806	\$667,332	\$858,259	\$601,976
Plus Other Income	<u>4,805</u>	<u>2,604</u>	<u>58,000</u>	<u>43,169</u>	<u>76,970</u>	<u>53,916</u>
Total Income	67,932	77,370	746,806	710,501	935,229	655,892
Less Expenses	<u>77,529</u>	<u>77,967</u>	<u>790,694</u>	<u>771,881</u>	<u>954,430</u>	<u>688,282</u>
Cash Surplus (Deficit)	(\$9,597)	(\$597)	(\$43,888)	(\$61,380)	(\$19,201)	(\$32,390)

### Special Giving Opportunities

Each month First Lutheran Church has designated giving opportunities, opportunities to give money to different ministries. Listed below are the ministries and amounts given during October 2011.

October Hunger Offering      \$1,389.97  
 El Salvador                      \$ 450.00

### Giving for the Ministries and Missions of First Lutheran Church

Weekly offering through:

Sun., Oct. 23    \$16,257  
 Sun., Oct. 30    \$15,095  
 Sun., Nov. 6     \$25,234  
 Sun., Nov. 13   \$10,269  
 Sun., Nov. 20   \$23,086

**Watch your mail for a wonderful year-end time for renewal giving opportunity!**



### KDAL AM Radio Broadcast

**FLC Sunday Worship Service at 8:30 a.m.**

First Lutheran Foundation invites and encourages members and friends of the congregation to sponsor a Sunday morning KDAL radio broadcast for \$100. The Foundation will match that gift with \$100 to cover the full cost of a broadcast (\$200). Call Nancy, 728-3668, to make arrangements.

### First Lutheran Church Foundation Grants August through November 2011

#### The Year of Celebration

First Lutheran Church Foundation granted up to \$4,000 to help the Board of Worship, Art and Music with costs of the inaugural organ concert series at FLC.

#### Spiritual Formation Retreat

Walking in the Light Support of up to \$1,450 was given by First Lutheran Church Foundation to assist the Board of Caring Ministries with the costs, including scholarships to help those attending who might have limited resources.

#### Time to Celebrate

The Board of Stewardship received a grant of \$2,375 to assist with stewardship activities including the Devotional Booklet, and the All-Congregation Progressive Dinner. The Foundation has also funded the second printing of the Devotional Booklet so that members can purchase extra copies (at the printing cost of \$3 each) and so that new members can have copies.

The First Lutheran Church Foundation is pleased to support and fund these projects and the many other projects which it has supported in the past. The Foundation continues to fund the matching Radio Broadcast program and appreciates those who have helped sponsor the radio broadcasts.

### End of Year Gifts

For contributions to be recorded as gifts for 2011, they must be received in the office by noon on Dec 30, 2011 (office will be open Fri., Dec. 30 from 9:00 a.m. to 12:00 noon), or postmarked by Dec. 31, 2011.

All mail postmarked in Jan. 2012, or received on Sun., Jan. 1, 2012 will be recorded as 2012 gifts. The IRS does not allow exceptions.

# GIVING

## December's Giving Opportunity CHUM Emergency Shelter Program

Looking for a Christmas gift idea that will really make a difference? Consider the **CHUM Emergency Shelter Program**. There are families and individuals in our community that are homeless, hungry, and out of options. They turn to CHUM for emergency assistance of shelter and basic necessities.

Help these individuals by directing your FLC special giving for the month of December to: CHUM Emergency Shelter Program. Write checks to First Lutheran Church with "CHUM Shelter" on the subject line. Use the special offering envelope in your offering packet, or any envelope. Mail or put in the offering plate on Sunday. The FLC Board of Church in Society thanks you, CHUM thanks you, and those served by your generosity thank you.

## Need a Great Gift Idea for Christmas? Give an ELCA Good Gifts

Americans spend over \$300 billion on Christmas shopping each year. That is a lot of stocking stuffers, fruitcake and Christmas sweaters! What if even part of this spending were redirected to fight against hunger and poverty? That ornament for a teacher could be changed into health and dental care for a child in an orphanage, or that sweater for your spouse could be transformed into a microloan for a woman in Mexico. You could actually give a gift that changes lives for generations.

Rethink your Christmas shopping this year and substitute at least one gift with a gift from the ELCA Good Gifts catalog. Look for the Good Gifts table in the gathering space between services during December and browse more than 65 different giving options that support life-changing projects and programs around the world. These gifts can be purchased in honor of a special person in your life—just in time for Christmas. Simply pick out gifts, take the appropriate cards, write a check to FLC and return the order form and check to FLC.



Sample of a gift card.

## Angel Tree Gifts for Families in Transitional Housing

Once again, First Lutheran is blessed with the opportunity to provide gifts for families in transitional housing during this Christmas season. The tree, filled with Angel Tags, all with wishes of children and families in Duluth, is in the Gathering Space.



Many families from Central City Housing (formerly Women's Transitional Housing) the American Indian Community Housing and First Lutheran's transitional house are in need of extra help this Christmas to provide some special gifts for their families.

This is a wonderful way to share in the upcoming Christmas season with others by demonstrating Christ's love through helping others. Please stop by the Angel Tree and take one of those angels off the tree (the goal is to have them ALL taken!).

After choosing an Angel, **please sign up in the book next to the tree, matching the angel color and number with the pages.** Instructions will also be available at the Angel Tree. Financial contributions are also welcome (submit to the office). There are eager people ready to shop for extra gifts.

**Wrapped gifts, with the Angel tags, are due at the church by Sun., Dec. 18.**

Thanks and blessings as we embark on the gift giving season, remembering the gift given to use, Christ!

## Fair Trade coffee, tea, and chocolate will be on sale again Dec. 11

Each year, Equal Exchange makes a 20 cent donation to the LWR Small Farmer Fund for each pound of coffee, tea or cocoa purchased through the project. **Over the past 15 years, Lutherans bought 1,250 tons, raising over \$550,000!**



Thank you to all who support this worthy effort through drinking coffee on a Sunday morning and contributing to the coffee fund, or purchasing products you take home each month.

# GIVING

# SERVING

## Scandinavian Food & Craft Festival News

The total proceeds from the festival was \$5,633.58! The FLCW board is working on designating gifts to many ministries. Watch for details in the January 2012 issue of *The Builder*.



## September-October Gifts

**Gift to the Radio Fund in honor of Jeanne Enstad's birthday** by Robert & Margaret Bell.

**Gift in honor of Ruth Larson and Martha Larson's birthdays** by Elizabeth & Arnie Larson.

**Gift to Time for Renewal Freed for Mission in honor of Milt & Ivah Sundquist's 60th Anniversary** by Dan & Jan McCarthy; **in honor of Emily Crook and DJ Hamm's wedding** by Tim & Kim Schandel, by Don & Mary Streufert, by Antti & Jane Lepisto, and by Vic & Terri Krause.

**Gifts to Time for Renewal in honor of Dick & Cecile Swenson's 50th wedding anniversary** by Dan & Marjorie Bergeland; **in honor of Sherry Boyce's mother** by Dan & Marjorie Bergeland.

**Gift to Time for Renewal in honor of Bob Johnson** for driving the golf cart at the outdoor worship by Betty Monson and friends.

## Order Christmas Poinsettias

Beautify the sanctuary, to the glory of God, with colorful poinsettias for the Christmas season. If you would like to purchase a plant, please fill out this form and attach a check (made out to FLC) for \$13 per plant. Return it to the church office or put it in an offering plate. Order deadline is Sun., Dec. 19.

Name \_\_\_\_\_

Phone No. \_\_\_\_\_ # Plants \_\_\_\_\_ at \$13 each

Total \_\_\_\_\_

Given in memory of / in honor of (circle one)

\_\_\_\_\_

\_\_\_\_\_



## Hands to Work and Hearts to God from Patti Hallback, Parish Administrator

*And suddenly there was with the angel a multitude of the heavenly host, praising God and saying "Glory to God in the highest heaven, and on earth peace among those whom he favors." Luke 2:13-14*

As we prepare for the "good news of great joy for all the people" we are given the opportunity to share that joy with others through the Angel Tree. Thanks to a few key folks, every year the FLC Angel Tree receives requests from families in our community. These requests then allow individuals and groups in our church to purchase a gift for someone who has faced some challenging situations.

Thank you to those who do all the coordinating, organizing and execution of getting the angel tree names and requests made known to the rest of us. They also organize the wrapped gifts and distribute them to the right location within a very short time frame.

Thanks also to those of you who willingly share your time and monetary resources to purchase and wrap an angel tree gift. So don't forget to find an angel and share in the joy of the season!



## M&M Event in December Holiday Cookie Exchange

Come to a holiday cookies exchange on Sat., Dec. 10 from 9:00-10:00 a.m. in the Parish Hall. Bring a dozen of cookies (no nuts please) which will be donated to the St. Louis County Jail family Christmas party. And bring 3 dozen cookies to exchange with the M&M group. Leave with 3 dozen cookies to enjoy during Advent and Christmas!

# SERVING

## What Does it Take to Become a Stephen Minister (and What Do You Receive in Return)?



Okay, admit it. Stephen Ministry has crossed your mind a few times. You might even have picked up a brochure or talked with a pastor about it. But now you want to take a closer look at the idea of becoming a Stephen Minister. You're wondering: Is this right for me? Following are some guidelines that might help you in your decision making.

### Gifts

A Stephen Minister is a person with the gift of mercy, who shows compassion and gives encouragement to and intercedes for those he or she cares for. Many Stephen Ministers say that they receive much more from the caring relationship with their care receiver than they give.

### Commitment

A Stephen Minister devotes time, energy, and resources to this ministry. In return, a Stephen Minister has the chance to participate in meaningful ministry, make a major difference in another person's life, and grow as a joyous child of God.

### Training

A Stephen Minister completes 50 hours of training before ever meeting with a care receiver. He or she learns about listening, assertiveness, confidentiality, and many other aspects of caregiving. After completing the initial training, he or she engages in continuing education. Stephen Ministers find that their relationships become richer and deeper at home, church, and work and with friends.

### Dedicated Service

A Stephen Minister serves wholeheartedly. This isn't a casual ministry. It involves prayer, thought, consideration, study, and commitment. In return, the Stephen Minister receives grateful thanks from his or her care receiver, the Stephen Leaders, the congregation, and our Lord.

### Accountability

A Stephen Minister is accountable to God, the congregation, the Stephen Leaders, the other Stephen Ministers, and the care receiver. In return, he or she receives support, encouragement, and guidance in Small Group Peer Supervision.

### Continuous Learning

A Stephen Minister is open to adjusting and adapting his or her caregiving to fit the needs of the care receiver. He or she learns more about caregiving at each meeting with a care receiver and at each supervision session. Stephen Ministry is an experience of continuous learning, growth, and joy.

**A new training class for Stephen Ministers is starting soon.** The Holy Spirit may be calling you to the joy, commitment, growth, meaning, training, service, and care of being a Stephen Minister. Pray for God's guidance as you consider this opportunity. For more information, contact Lezlie Oachs (724-5860), Ron Carlson (525-6542), or Don Streufert (724-9084).

---

## Help Needed in the Library

The church library committee is looking for new committee members to help in the library. The committee meets on the 1st and 3rd Mondays of the month from 1:00-3:00 p.m. The members also take turns staffing the library on Sunday mornings during the education hour.

If you are interested, they would love to have you join them. Please call Carol Hanson, 724-3273, if you have any questions.

## Knitters and Crocheters Welcome Prayer Shawl Ministry

**Not meeting in December, but will meet  
Jan. 12, 2012, 1:00 p.m.**



The First Lutheran Prayer Shawl Ministry meets the second Thursday of the month in the 3rd floor conference room at 1:00 p.m. Yarn, needles and patterns are furnished, and shawls can be taken home to be worked on. If you have any questions, please call June Alsop (525-3307).

# RELATING

## Some History on FLC Properties

*At the congregational meeting in September, Tom Boman provided some verbal comments about the history our FLC buildings on the corner of 12<sup>th</sup> Avenue East and Superior Street. It was suggested that Tom write up his comments for print in the Builder for more people to have a historical perspective on this property. Below are some of the highlights from Tom's write up. A complete version can be found on our website [www.flcduluth.org](http://www.flcduluth.org).*

The First Lutheran Church buildings on the corner of 12<sup>th</sup> Ave. E and Superior Street, typically referred to as the "Old Dental Building" and the "Transitional Living House", are being studied as a potential site of a joint venture between Lutheran Social Services of Duluth and FLC to build a new building called the "Center for Changing Lives". It might be helpful to recall the history of those buildings and how this proposed new building fits into our church mission and strategic plan.

When the dentist was killed in a plane crash, the FLC administrator, Phil Friest, with Planning Council approval, approached the executors of the dentist's estate and offered to buy the building. The idea was that the building would eventually be torn down to provide for more on-site parking for FLC members.

About a year or two after the sale one the FLC pastors suggested that FLC should reconsider the use of the house and make it into something that fit the mission of the church. The Planning Council agreed and developed a plan to make the house into a place where down-and-out families could temporarily live until they could get their

lives back in order. CHUM was contacted to assist in identifying families for the house. The house was renamed to the "FLC Transitional Living House".

Then came LSS of Duluth who offered to lease the dental office building as a visitation center where families and individuals that needed, or required, supervised visits could meet in privacy and dignity. The LSS Changing Lives Building proposal would tear down the dental building and the transitional house and build a 10 million dollar building that would house all of LSS Duluth operations including an expansion of the highly successful Renaissance House and Health Center for teenage youth. Fund raising would be the responsibility of LSS.

The new building would include two levels of underground parking, one level which would be available to FLC at all times, and both levels available to FLC on weekends. The new parking would increase FLC weekly parking space by about 50% and Sunday parking by about 100%. More importantly, the new building would move forward the mission of FLC to serve all of God's children who are in need. It is a plan that could be a win/win for both LSS and FLC.

The LSS proposal is very preliminary at this stage and there are many questions to be considered and answered. It is an exciting opportunity and we hope that all FLC members will stay involved and informed.

Submitted by Tom Boman, member of the Board of Church in Society

---

## East High School Choraliers to sing at FLC Wed., Dec. 14 at 9:35 a.m.

You are invited to enhance your morning coffee break with a Christmas concert by the renowned East High School Choraliers, Wed., Dec. 14 at 9:35 a.m. in the FLC sanctuary. The concert is typically about 40 minutes long. Reception to follow in the Gathering Space. This event is sponsored by the Gitche Gumees Kiwanis Club which meets at First Lutheran. The Choraliers are a group of 16 superb singers dressed in old English costumes. The group was started by Bob Mix of FLC choir fame and now directed by Jerry Upton who served for a couple years as the FLC interim choir director. The concert is free. Invite your friends.



# RELATING

## Update on Governing Process

By Tom Whittaker and Becky Hoversten-Mellem

As reported in the November issue of *The Builder*, the Planning Council spent most of Sat., Nov. 19 at Wilderness North in Brimson getting to know each other better, worshipping, Communing and discussing First Lutheran's governance structure. It was a very positive experience for all who were able to attend. Highlights of the governance discussion were:

- The Executive Council looked at the board structure, and concluded that the kinds of changes required to address the issues were like starting over, and decided that if starting over, FLC should look at current church governance structures that have been embraced by growing congregations. The committee talked with Pastor Mark Solyst of English Lutheran in LaCrosse, and with Pastor Debra Samuelson of Good Shepherd Lutheran in South Minneapolis. Good Shepherd has restructured its governance pursuant to the concepts in the book "Governance and Ministry", by Dan Hotchkiss. Members of the Planning Council have copies of this book and copies will also be available for members of the congregation.

- In January, members of the EC will be making presentations to small groups and hold cottage meetings so that members of the congregation can learn more details about the proposed structure. These meetings will allow questions and feedback from members of the congregation which will be taken into account as further details on this proposed structure are developed.

### ***Governance and Ministry***

Book by Dan Hotchkiss

If you would like to purchase a copy of **Governance and Ministry** on "Rethinking Board Leadership", copies are available in the church office for \$17.

### **Topnotchers**

**Fri., Dec. 16 at 12:30 p.m. *Note date and time.***

**Topnotchers** (anyone 50 and over) will meet Fri., Dec. 16 at 12:30 p.m. The cost of the meal is \$8. Those who are attending for the first time are asked to call Dorothy by **Tues., Dec. 13 (525-5550)** to let her know you are coming.

## Becoming a Love & Logic Parent

◆ a workshop series ◆

**Jan. 11, 18, 25 & Feb. 1**

**6:00-8:00 p.m. each night**

- \$25 per person/couple; open to community
- optional community dinners on the 2nd & 4th night
- limited childcare available; \$20 per child
- registration deadline Fri., Dec. 9
- download form at [www.flcduluth.org/](http://www.flcduluth.org/) - youth & family
- contact Anya Powell or Amy Carlson with questions, 728-4299 or 340-9819

### **"Parenting with Love & Logic" is based on:**

- teaching children (toddlers to teens) responsibility
- empathy, choices & natural consequences
- raising children whom our church leaders look to, teachers call on, kids befriend & employers hire

### **You benefit from:**

- valuable & tangible parenting skills & techniques
- Christian fellowship within your parenting community
- confidence & peace in your home
- oh, yeah - fun!

Independent Facilitators: Lana Birkeland, Sharon Yung & Karen Zimmerman. Connected with: Board of Ed, Promise Preschool, MOPS and LSS. Supported by: FLC Foundation.



### **Ushers Needed**

First Lutheran Church is looking for Ushers for the 2012 year. There is a shortage of ushers for next year for both services, but especially the 11:00 a.m. service. There are normally 3 teams for each service, which means ushers will be scheduled only every 3 months. If an usher is unable to assist on an assigned Sunday, replacements are available.

Contact Bob Johnson if you can help out, or if you have any questions: 724-4796.

# RELATING

**.Space to Grow.  
grow in development.  
grow in community.  
grow in faith.**



*Let the little children come to me, and do not hinder them, for the kingdom of heaven belongs to such as these.*  
Matthew 19:14

**What:** Lifelong education in the FLC faith community. Unanimously approved project (by the Planning Council & Executive Committee) to complete the shelled in room under the new Gathering Space, adjacent to 2-3 year old Sunday School rooms & Promise Preschool.

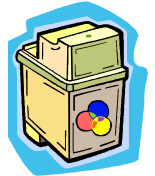
**Why:** To be used as a safe and educational multipurpose room for *all the children of God*, including Sunday School, Promise Preschool, and Lutheran Social Service, with the bonus of an adult education space available on the sanctuary level.

**Tours of the Space will be given on Sun., Dec. 18** during the education hour; please meet at 9:45 outside the 2-3 year old Sunday School area. Also, Space to Grow Steering Team members will be meeting with FLC Boards in December. If you are not reached through one of these venues and still curious, please feel free to take a self-guided tour in the space anytime or visit the FLC website/church office for additional information and contribution forms.

Finally, stay tuned for more information regarding "Race to Grow", a fun run/walk for all of God's children, celebrating lifelong education in the faith community! Contacts: George Rennan (Chair) or Anya Powell (Co-Chair).

## Empty Inkjet Cartridges Wanted

FLC youth have launched a fundraising project: recycling empty inkjet cartridges! Youth will receive up to \$4 for each cartridge turned in. This will directly benefit the youth attending the 2012 Synod Journey and ELCA Youth Gathering, not to mention it is great for the environment. You can help! Any inkjet cartridge with a print head can be recycled, regardless of brand or type. Bring in your empty inkjet cartridges (placed in Ziploc bag to keep it safe from spills and damages) to the church office or recycle box in the Parish Hall.



## Just can't resist them!

It's cinnamon rolls! On Sun., Dec. 4, the youth will be selling the rolls after services. Make sure you get a package before they are all gone! One roll is \$1 and a package of 6 is \$5. Proceeds go towards youth camperships.



## The 2012 Friendship English Language (Bible) Camps

### A Short-Term Mission Opportunity in Russia

Members of the NE MN Synod and First Lutheran have participated every year in the **Friendship English Language (Bible) Camps** in Petrozavodsk and Kondopoga, Russia. This includes interactions with Synod Friendship Congregations in Petrozavodsk and Kondopoga and with Pastor Alex and Nadia Krongolm, whose youth ministry work is supported by our church. The date for the 2012 FELCs is May 29-June 18; the deadline for applying to be part of the 30-member team is January 31, 2012.

This mission ministry program is organized by East European Mission Network at the invitation of the schools or in Lutheran churches. Participants of this 3-week visit you participate in two week-long "Camps" involving various activities and a class with the Bible as the basis for the curriculum. You have a Russian translator and stay in a Russian home. The basic criteria for participation are good health, a desire to share the Good News, and willingness to participate in a basic English language curriculum in a cross-cultural relational setting (no experience required—orientation will be provided). Participation is a rewarding and joyful, even life-changing, experience!

Information and reports of recent experiences are available at [www.fleduluth.org](http://www.fleduluth.org) (Ministries-Global-Russia), [www.nemnsynod.org](http://www.nemnsynod.org) (Mission-Russia) and [www.eemn.org](http://www.eemn.org) (Short-Term Missions).

It would be great to have a team from our church again in 2012! If interested give Paul or Carol Anderson a call (218-728-5853 or Email at [panderso@d.umn.edu](mailto:panderso@d.umn.edu)).

## Planning Council Update - Nov. 2011

**Pastor's Report:** The first nine weeks of confirmation is finishing. She has had several conversations with members regarding the new requirements. Adjustments will be made in January. A letter will be sent to all members regarding confirmation.

**Welcome Desk:** Mary Streufert is working with Dave Walter to recruit volunteers for Welcome Desk. It is important to greet, welcome and direct worshipers as they enter church. Groups are asked to inform volunteers of upcoming events so they can answer questions correctly. Desk is staffed Sundays from 8:00 a.m.-12:30 p.m.

**Treasurer's Report:** Operations will be over budget by about \$15,000 due to rising heat costs and more space to heat. The year-end deficit should be \$34,000 instead of \$19,000. MN Power energy audit was received. There are good recommendations in the audit. First Fruits is increasing every year. This is 20% of FLC income that is given as benevolence.

### Board Budget Plans

Stewardship – Will continue working with Rebecca Sundquist. Will continue with Progressive Dinner. Nov. 11, 2011, is commitment Sunday. There are 156 commitments to date. Pledges are \$20,000 less than 2011. Would like to focus more on the education of Stewardship.

Youth and Family – Some activities planned for 2012 are an outing to Adventure Zone, a hayride, and a skating party. Camp Sunday is 1/15/12.

Education – 2011 is the first year of the improved confirmation program. Board of Educ. has an advisory role in the confirmation program. The Space to Grow project will cost approximately \$90,000. Promise Preschool is growing. Some Promise families are joining FLC. They will be working on a new adult ed program.

Worship, Art and Music – Budget will increase \$1,400 to purchase instruments, piano and organ tuning. The budget for 2011 was not high enough.

Church in Society – Working on making sure their objective/action plans correspond to the Vision Statement of FLC. It is challenging to determine how money should be divided among organizations. Will list all LSS organizations together. Will encourage congregation members to become involved in organizations as well as support them financially.

Global Ministries – Bring education and awareness to congregation. Align with church-wide ELCA on mindset of global ministry. Focus is on water, malaria, and hunger. Jan. 29 is Global Festival of Faith. A good way to learn about justice is through global ministry. We should become one in Christ with all the nations.

Evangelism – Added more information on FLC in friendship folder. Have mentor/contact people in place to call people interested in FLC. Thirty-two new members (including 20 children) are in the new member group. There is a spiritual retreat in January 2012. Paula Tsufis is working on technology. There will be a new logo and signage for the church.

Operations – Work is being done on bathrooms in the gathering space, moisture in the sanctuary, and long-term plumbing issues.

Caring Ministries – They are working on their mission statement. Nancy Erickson will check with Pastor Sonja on the number of communion kits needed.

# OFFICERS AND BOARD CHAIRS

# CONGREGATIONAL MEETING

## Annual Meeting Update - September 25, 2011

**Pastor's Report:** Pastor Judd spoke about the Faith and Life Committee and that every member of the congregation needs to be a spiritual parent to the youth of the congregation. He reviewed the confirmation changes that are being implemented this fall. One of the goals is to encourage life-long learning.

### Lutheran Social Services Project

- Cathy Bergh, Director of LSS and Pat Connolly, Housing Development, were present to give an update on the Center for Changing Lives project that has been proposed for FLC property.
- LSS is preparing a budget and applying for grants for funding.
- Concerns were voiced regarding FLC's role in the project. It was stressed that LSS is a long way from involving FLC in the project. Another concern was whether FLC considered any other organizations for partnership of any kind. It was clarified that LSS has sought out FLC for this project and that FLC was not actively seeking any organization for partnering in any way. FLC has had a long-standing relationship with LSS.

**Treasurer's Report:** Treasurer Jim Zastrow reviewed the Income and Expense report dated August 2011. The overall financial status of FLC as of this date is good. The salary expense is up due to having a full staff in place. Operations expense is up due to rising heating costs and more space to heat. Minnesota Power will be doing an energy audit.

**Freed for Mission:** Ann Niedringhaus reported on the status of the Freed for Mission Campaign. The match program has been extended to December 31, 2011. All monies given to this campaign will lower the amount of the mortgage needed in January.

**Governing Structure:** The Executive Committee is working on a new governing structure to present to the Planning Council at its November retreat.

**New Business:** Kathy Morris was elected to serve on the Board of Evangelism.

<b>President</b>	Becky Hoversten-Mellem
<b>Vice President</b>	Les Drewes
<b>Past President</b>	Robert Niedringhaus
<b>Treasurer</b>	James Zastrow
<b>Secretary</b>	Becky Kilgore
<b>Councilors at Large</b>	Char Juntunen Tom Whittaker
<b>Board of Caring Ministries</b>	Nancy Erickson
<b>Board of Church in Society</b>	Sheryl VanScoy
<b>Board of Education</b>	George Rennan
<b>Board of Evangelism</b>	Candy Madich
<b>Board of Global Ministry</b>	Ann Beck
<b>Board of Operations</b>	Tim Johnson
<b>Board of Stewardship</b>	Dave Lothner
<b>Bd of Worship, Art &amp; Music</b>	Mark Hakes
<b>Board of Youth</b>	Victor Krause
<b>FLCW Board Representative</b>	Beth Holst

## GET BETTER CONNECTED ON OUR WEBSITE

- ◆ Go to [www.flcduluth.org](http://www.flcduluth.org)
- ◆ Sign up for *FirstNews* weekly e-mail updates by sending an e-mail to [flchurch@flcduluth.org](mailto:flchurch@flcduluth.org)
- ◆ Sign up to receive a full color, digital issue of *The Builder* via email (go green)
- ◆ Download new and previous editions of *The Builder*

# DECEMBER CALENDAR

Sun	Mon	Tue	Wed	Thu	Fri	Sat
				<i>1</i> 7:00 Men's Pryr UC 8:45 MOPS PH and classrooms 9:00 Yoga-YR 11:30 FLCW Luncheon 5:30 Jublation Rgr-MR 6:00 Bd of Ops Mtg 7:00 Companions CH	<i>2</i> 7:00 Men's Comp CH 9:30 Fri. Morning Bible Study w/ Pr. Larson-PH 11:15 Women's Discipleship-CH	<i>3</i> <sub>10:00 AA - YR</sub>
<i>4</i> Cinnamon Roll Sunday 8:30 Worship - S 9:45 SS 9:45 Youth Rngrs-MR 9:45 Altar Guild-CF 10:00 Love&Logic-PH 11:00 Worship - S 4:00 Recharge-YR	<i>5</i> 1:00 Library Comm. 5:15 AA - PH 6:00 Sojourners II-CH 6:00 Sojourners III-CF 7:00 M&M Bible study 7:00-Ruth Gathering	<i>6</i> 9:00 Steph Min-#307 11:45 Book Group-UC 1:00 PR Meeting-CR 4:15 Past Pres Prayer 5:30 Bd of Ed-UC 6:30 Foundation-CF 7:00 Bd of Evang L	<i>7</i> 8:00 Pryr Comm - CH 10:00 Staff Mtg-CH,CF <b>12:00-7:00 Lutefisk, Salmon &amp; Meatball Dinner-PH</b> <b>5:30 Advent Service</b> 6:15 2nd Serv Choir 7:15 Soli Deo Gloria	<i>8</i> 7:00 Men's Pryr UC 9:00 MOPS-UC 9:00 Yoga-YR 5:30 Jublation Rgr-MR 6:00 Bd of Ops Mtg 6:30 Executive Cmte-CF 7:00 Companions CH 7:00 OSL-Lib	<i>9</i> 7:00 Men's Comp CH 9:30 Fri. Morning Bible Study w/ Pr. Larson-PH 11:15 Women's Discipleship-CH 12:30 Topnotchers-PH	<i>10</i> 9:00 M&M Cookie Exchange-K,PH 10:00 AA - YR 10:00 Soli Deo Gloria Rehearsal-S 10:30 Bunco-Inter-generational Event-UC
<i>11</i> Fair Trade Sales 8:30 Worship - S 9:45 2&3 Yr Old SS Christmas Program-PH 9:45 Youth Rngrs-MR 11:00 Worship - S 12:00 Pottery Burn-PH 4:00 Advent Lessons & Carols-S 4:00 Recharge-YR	<i>12</i> 5:15 AA - PH 6:00 Sojourners II-CH 6:00 SojournersIII-CF	<i>13</i> 9:00 Steph Min-#307 9:30 Leah Gathering-PH 4:15 Past Pres Prayer 6:30 Bd of Church in Society-UC 7:00 Bd of Global Ministry-Rm 307 7:00 Bd Worship/Art/Music-CF	<i>14</i> 8:00 Pryr Comm - CH 10:00 Staff Mtg - CH,CF <b>5:30 Advent Service</b> 6:15 2nd Serv Choir 7:15 Soli Deo Gloria	<i>15</i> 7:00 Men's Pryr UC 8:45 MOPS PH, etc. 9:00 Yoga-YR 12:00 Naomi - at Gramercy Park 1:00 Prayer Shawl-CF 4:00 Finance Com CF 5:30 Jublation Rgr-MR 6:00 Bd of Ops Mtg	<i>16</i> 7:00 Men's Comp CH 9:30 Fri. Morning Bible Study w/ Pr. Larson-PH	<i>17</i> <sub>10:00 AA - YR</sub>
<i>18</i> 8:30 Worship - S 9:45 SS/Adult Ed 9:45 Youth Rngrs-MR 11:00 SS Christmas Program (4 yr - 6 gr)- S 12:00 Lunch w/ Sunday School-PH	<i>19</i> 5:15 AA - PH 6:00 Sojourners II-CH 6:00 SojournersIII-CF	<i>20</i> 9:00 Steph Min-#307 4:15 Past Pres Prayer 7:00 Bd of Stewardship-UC	<i>21</i> 8:00 Pryr Comm - CH 9:30 Elizabeth-UC 10:00 Dorcas-Homes 10:00 Staff Mtg CH,CF 10:00 Promise Pre-school Christmas Program-S,PH 11:00 Esther-Lakeshore 6:15 2nd Serv Choir 7:15 Soli Deo Gloria	<i>22</i> 7:00 Men's Pryr UC 9:00 Yoga-YR 1:30 FLCW Bible Study Leaders-CF 5:30 Jublation Rgr-MR 6:00 Bd of Ops Mtg 7:00 Bd of Youth-CF	<i>23</i> 7:00 Men's Comp CH Office Closes at Noon	<i>24</i> <sub>10:00 AA - YR</sub> <b>Christmas Eve</b> <b>3:00 - Worship</b> <b>4:30 - Worship</b> <b>11:00 - Worship</b>
<i>25</i> <b>8:30 Worship - S</b> <b>10:00 Worship - S</b> <i>(note times)</i>	<i>26</i> Church Office Closed 5:15 AA - PH	<i>27</i> Church Office Closed	<i>28</i> Church Office Closed	<i>29</i> Church Office Closed	<i>30</i> Church Office open from 9:00 a.m. to 12:00 noon	<i>31</i> 10:00 AA - YR



# Evangelical Lutheran Church in America

God's work. Our hands.

**First Lutheran Church**  
**1100 E. Superior St.**  
**Duluth, MN 55802**  
**218-728-3668**  
**flchurch@flcduluth.org**



VOLUME 64 No 12

**The Builder** (USPS 552-000) is published monthly by First Lutheran Church, 1100 E Superior St, Duluth, MN 55802-2285. Periodicals Postage Paid at Duluth MN 55806. POSTMASTER: Send address changes to THE BUILDER, First Lutheran Church, 1100 E. Superior St, Duluth MN 55806-2285

## STAFF

### First Lutheran Church

Office: (218)728-3668

www.flcduluth.org  
Fax: (218) 728-6227  
flchurch@flcduluth.org

### Pastors: (Ext. #)

Pastor April Ulring Larson (207) PastorLarson@flcduluth.org  
Senior Pastor

Pastor Judd Larson (202) juddlarson@flcduluth.org  
Associate Pastor

Pastor Sonja Anderson (209) chaplain@flcduluth.org  
Chaplain

### Program Staff:

Sarah Gunderson (210) sarah@flcduluth.org  
Director of Christian Education

Jason Branham (212) jason@flcduluth.org  
Director of Music Ministry

Karen Sande (211) ksande@flcduluth.org  
Asst. Director of Music Ministry

Chad Christianson (215) chad@flcduluth.org  
Director of Youth and Family Ministry

Rebecca Sundquist Foundation/Stewardship Advisor

### Office Staff:

Patti Hallback (205) phallback@flcduluth.org  
Parish Administrator

Janet Freund (203) janet@flcduluth.org

Nancy Hamre (204) nancy@flcduluth.org  
Builder@flcduluth.org

*The Builder* Editor

### Custodial Staff:

Duane Sieger (232) Archives (231)

Steve Malinowski (232) Youth Room (225)

Ellis Ekker Kitchen (218)

### Other extension numbers:



PLEASE RECYCLE

## WELCOMING STATEMENT

First Lutheran Church, dedicated to the mission of Jesus Christ, welcomes you into our community of faith, where we share life in its entirety, with all its joys and sorrows. We believe all people are created in the image of God and are offered God's love, grace and forgiveness, regardless of: religious tradition, age, gender, race, education, economic status, sexual orientation, family structure, mental or physical abilities. If you have felt excluded here or elsewhere, to you we extend a special welcome in Christ's love.

### ***The Builder* Schedule**

The following dates are the deadlines for submitting articles. Articles submitted after deadline will be published in the next issue. If possible, e-mail articles to: builder@flcduluth.org.

#### **JANUARY 2012 NEWS**

Deadline: Sun., Dec. 18 Noon

#### **FEBRUARY 2012 NEWS**

Deadline: Wed., Jan. 18, Noon

For more information about staff, programs and events at First Lutheran Church, please go to our updated website:

**www.flcduluth.org**